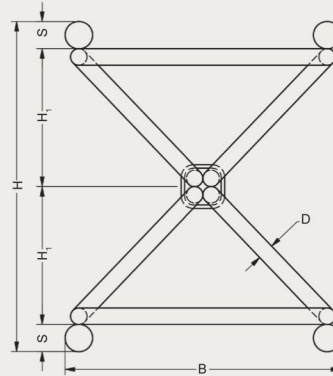
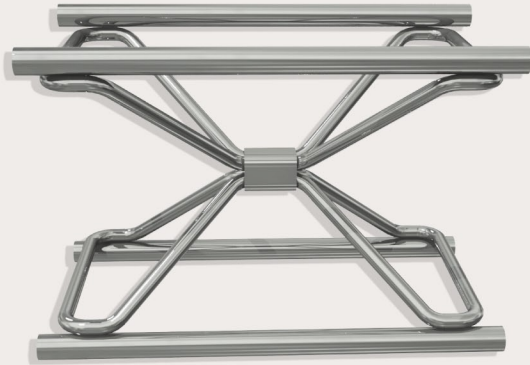


LATTICE GIRDERS/ 4 BARS

With spaced diagonals, 4 bars are assembled to form a girder. Fabrication of the girder to the design geometry is possible. The spaced stiffening elements reduce the local buckling length of the bars and assure a high normal and bending moment resistance and a secure transfer of lateral forces in the lining before the shotcrete has reached its design strength.



TYPE	D in	S BAR SIZE	WEIGHT lbs/ft	H in	B in	A BAR in ²	I _x in ⁴	S _x in ³	I _y in ⁴	S _y in ³	JOINT PLATE			FOOT PLATE	
											SIZE [in]	LENGTH [in]	UNIT WT [lbs]	SIZE [in]	UNIT WT [lbs]
100	0.39	5	7.61	5.19	3.94	1.2	6.42	2.47	3.40	1.72	L5 x 3 x 1/2x	5 1/4	5.6	1/2 x 5 x 7	5.0
		6	8.88	5.44		1.8	9.77	3.59	4.55	2.31		5 1/2	5.9		
		7	10.23	5.69		2.4	14.04	4.94	5.75	2.92		5 3/4	6.1		
		8	13.43	5.94		3.1	19.34	6.52	6.97	3.54		6	6.4		
		10	17.16	6.44		4.9	33.50	10.41	9.34	4.75		6 1/2	6.9		
140	0.39	5	7.88	6.76	5.51	1.2	11.54	3.42	7.32	2.66		6 3/4	7.2	1/2 x 7 x 9	8.3
		6	9.14	7.01		1.8	17.32	4.95	10.03	3.65		7	7.5		
		7	10.51	7.26		2.4	24.55	6.77	12.98	4.72		7 1/4	7.7		
		8	13.71	7.51		3.1	33.38	8.90	16.10	5.86		7 1/2	8.0		
		10	17.42	8.01		4.9	56.39	14.10	22.65	8.24		8	8.5		
180	0.39	5	8.51	8.34	7.09	1.2	20.28	4.64	12.85	3.63	8 3/8	8.9	1/2 x 8 x 10 1/2	11.9	
		6	9.78	8.59		1.8	30.13	6.70	17.82	5.03	8 5/8	9.2			
		7	11.15	8.84		2.4	42.29	9.14	23.34	6.58	8 7/8	9.5			
		8	14.35	9.09		3.1	56.94	11.99	29.32	8.27	9 1/8	9.7			
		10	18.06	9.59		4.9	94.44	18.89	42.33	11.94	9 5/8	10.3			
220	0.47	5	9.8	9.91	8.66	1.2	28.45	5.55	19.84	4.58	9 15/16	10.6	5/8 x 10 x 12	21.2	
		6	11.06	10.16		1.8	42.06	8.01	27.71	6.40	10 3/16	10.9			
		7	12.43	10.41		2.4	58.75	10.93	36.57	8.44	10 7/8	11.1			
		8	15.63	10.66		3.1	78.74	14.32	46.29	10.65	10 11/16	11.8			
		10	19.34	11.16		4.9	129.41	22.51	67.88	15.68	11 3/16	11.9			